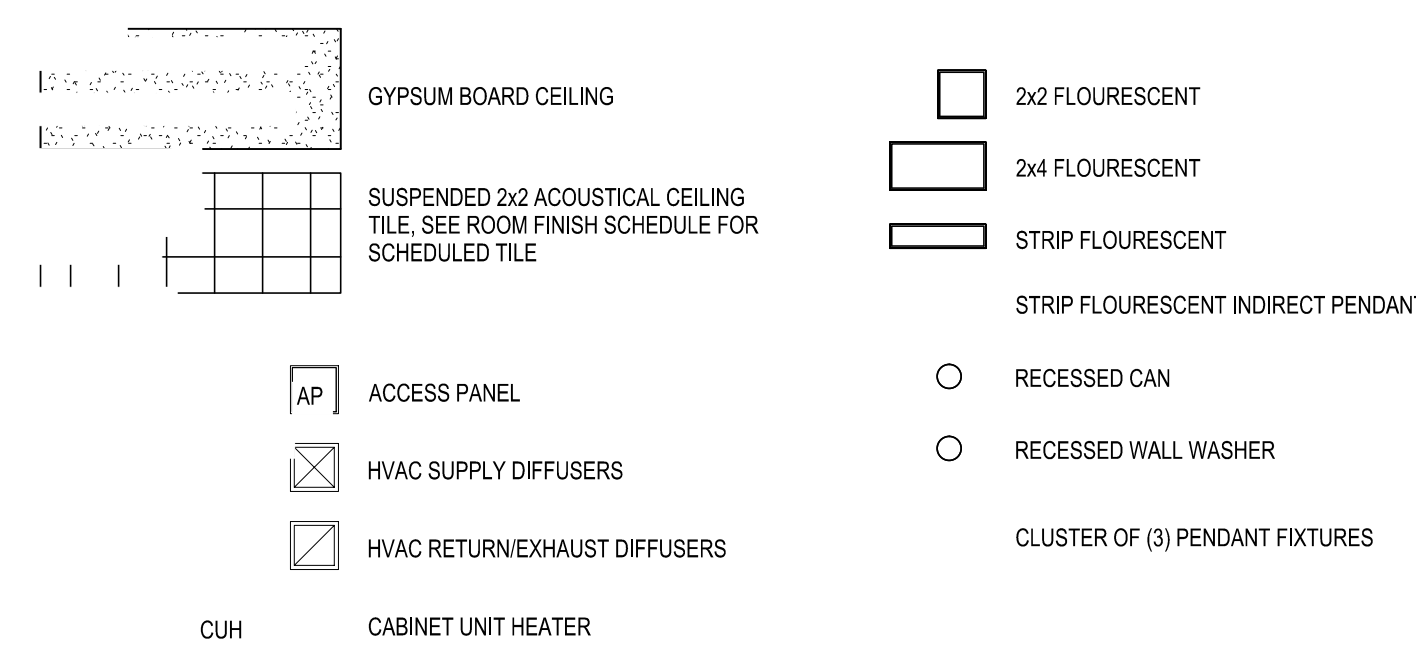


GENERAL CEILING PLAN NOTES

- A. CEILING HEIGHTS ARE NOTED ON THIS DRAWING. ALL CEILINGS SHALL BE 9'-8" A.F.F. UNLESS OTHERWISE NOTED ON THIS DRAWING. ROOMS THAT ARE SHOWN WITH NO CEILING SHALL BE EXPOSED STRUCTURE, AND SO HAVE NO CEILING HEIGHT NOTED.
- B. ALL GWS SOFFITS SHALL BE FLUSH WITH THE ADJACENT ACOUSTICAL TILE CEILING UNLESS OTHERWISE NOTED.
- C. THIS PLAN SHALL BE USED TO ESTABLISH THE LOCATIONS OF THE MAJOR CEILING PENETRATIONS INCLUDING: LIGHTING, HVAC GRILLES, ACCESS PANELS, SPRINKLERS, SPEAKERS, ETC. SEE M.E.P. DRAWINGS FOR MORE SPECIFIC INFORMATION REGARDING EACH DISCIPLINE. IF CONFLICTS ARE DISCOVERED REGARDING LOCATION OF CEILING PENETRATION, CONTACT THE ARCHITECT FOR FURTHER INFORMATION.
- D. PROVIDE CUT-OUTS AND OPENINGS FOR ITEMS WHICH PENETRATE THROUGH CEILING SYSTEMS (INCLUDING SPECIAL EQUIPMENT HANGERS AND DEVICES, CONDUIT, PIPING, ELECTRICAL REQUIREMENTS, ETC.).
- E. ACOUSTICAL TILE CEILING TYPES ARE IDENTIFIED IN THE THE ROOM FINISH SCHEDULES AND SPECIFICATIONS.
- F. CONTROL JOINTS SHALL BE INSTALLED TO DIVIDE GYPSUM CEILINGS INTO 30'-0" MAXIMUM LENGTHS AND WIDTHS. JOINTS SHALL BE INSTALLED AT EXPANSION AND CONTRACTION JOINTS IN THE STRUCTURAL FRAMEWORK SUPPORTING THE GYPSUM BOARD FINISH.
- G. CENTER LIGHTS, SPEAKERS, SPRINKLER HEADS, HVAC GRILLES, SMOKE DETECTORS, ETC. IN CENTER OF CEILING TILES UNLESS OTHERWISE NOTED.
- H. GRIDS ARE FOR REFERENCE ONLY. CONTRACTOR TO SET CONTROL POINTS FOR LAYOUT.
- I. FOR CEILING MOUNTED EQUIPMENT PROVIDE CONCEALED STRUCTURAL SUPPORT PER SPECIFICATION SECTION 05 00.00, TYP.
- J. DIMENSIONS ARE TO CENTERLINE OF FIXTURE, TYP.

CEILING LEGEND



INTERIOR PLAN KEYNOTES

- 1 ALIGN FLUSH
- 2 PLASTER TRAP - SEE EQUIPMENT DRAWINGS
- 3 EMERGENCY EYEWASH - SEE EQUIPMENT DRAWINGS
- 4 CONTINUOUS ELECTRICAL RACEWAY - SEE ELECTRICAL DRAWINGS
- 5 CONCEALED CEILING MOUNTED PROJECTION SCREEN, SIZE TO BE DETERMINED BY AV EQUIPMENT DESIGNER. COORDINATE WITH AV EQUIPMENT DESIGNER.
- 6 PROJECTION SCREEN CONTROLS
- 7 CEILING MOUNTED PROJECTOR - BY OWNER. PROVIDE STRUCTURAL SUPPORT ABOVE CEILING PER SECTION 0550.
- 8 DENTAL HANDPIECE MAINTENANCE SYSTEM - OF/OI
- 9 PORTABLE X-RAY - OF/OI - SEE EQUIPMENT DRAWINGS
- 10 UNDER COUNTER REFRIGERATOR - OF/OI - SEE EQUIPMENT DRAWINGS
- 11 REFRIGERATOR/FREEZER - OF/OI - SEE EQUIPMENT DRAWINGS
- 12 COFFEE MAKER - OF/OI - SEE EQUIPMENT DRAWINGS
- 13 WATER COOLER - OF/OI - SEE EQUIPMENT DRAWINGS
- 14 WIRE STORAGE SHELVES 36"W x 21"D x 72"H - OF/OI
- 15 PAPER TOWEL DISPENSER - OF/OI
- 16 SOAP DISPENSER - OF/OI
- 17 MICROWAVE - OF/OI
- 18 WIRE RACK HIGH DENSITY SHELVING ON FLOOR TRACKS, CONSISTING OF (4) FIXED END UNITS 18" x 48" x 72"H AND (8) UNITS ON CASTERS 21" x 48" x 72"H ON TWO SETS OF TRACKS
- 19 PACKING TABLES - OF/OI

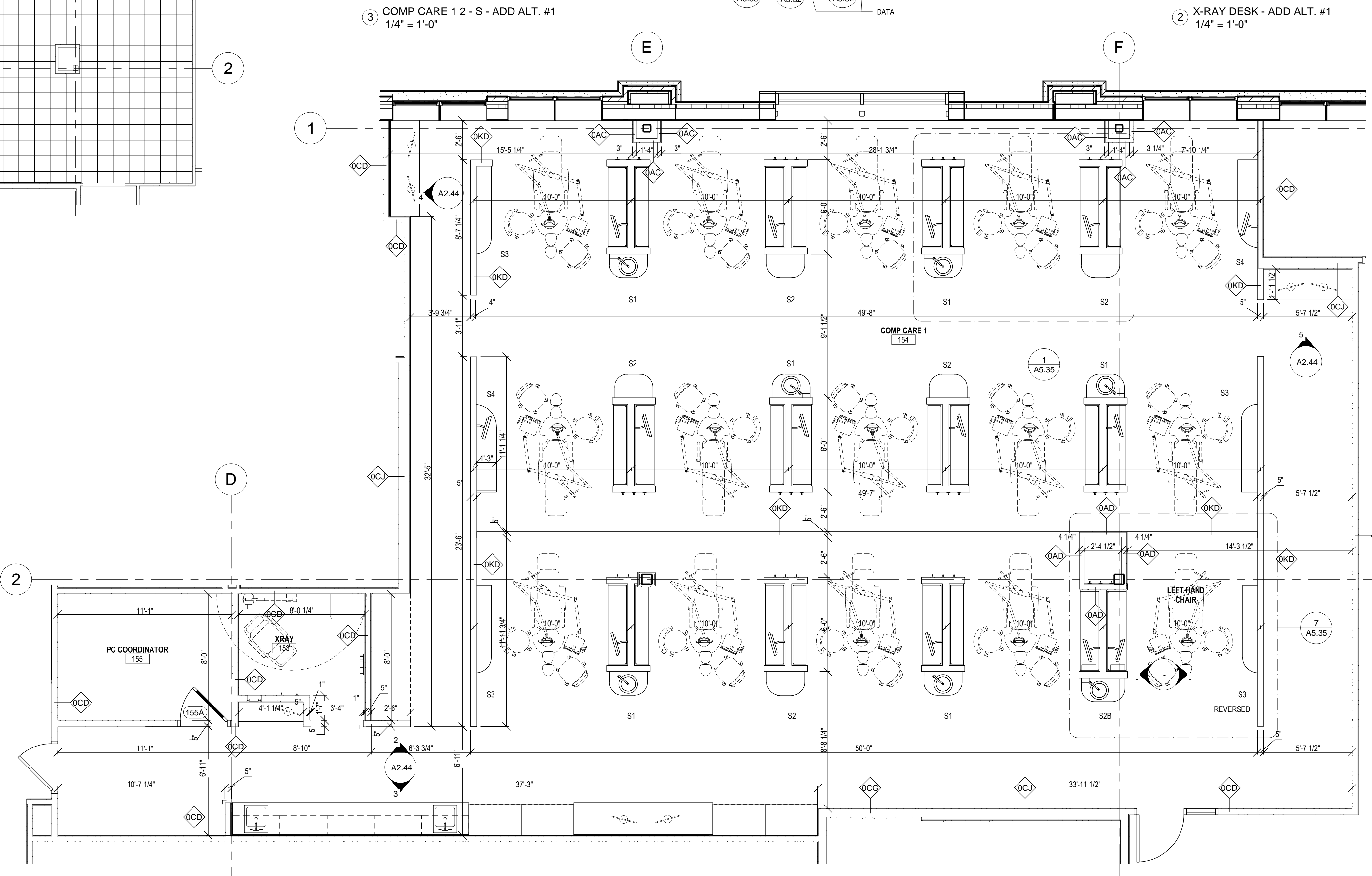
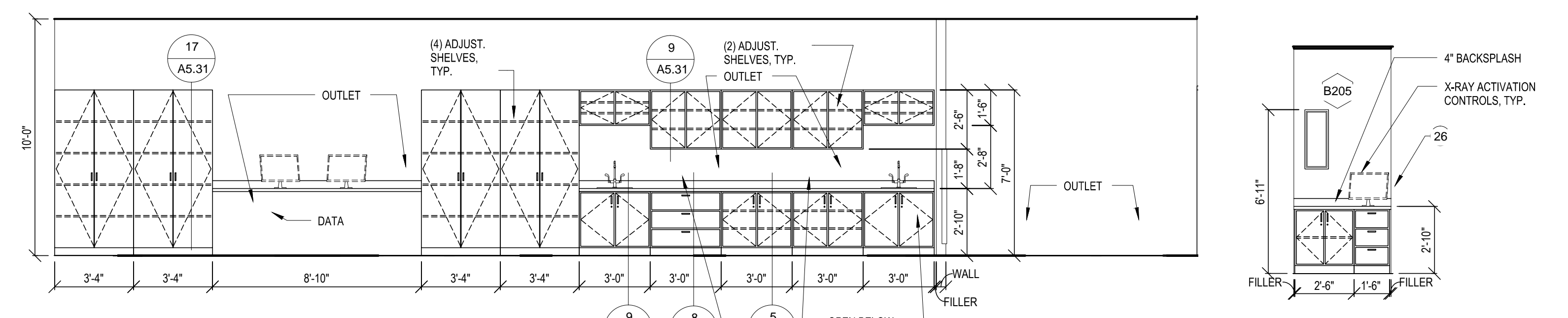
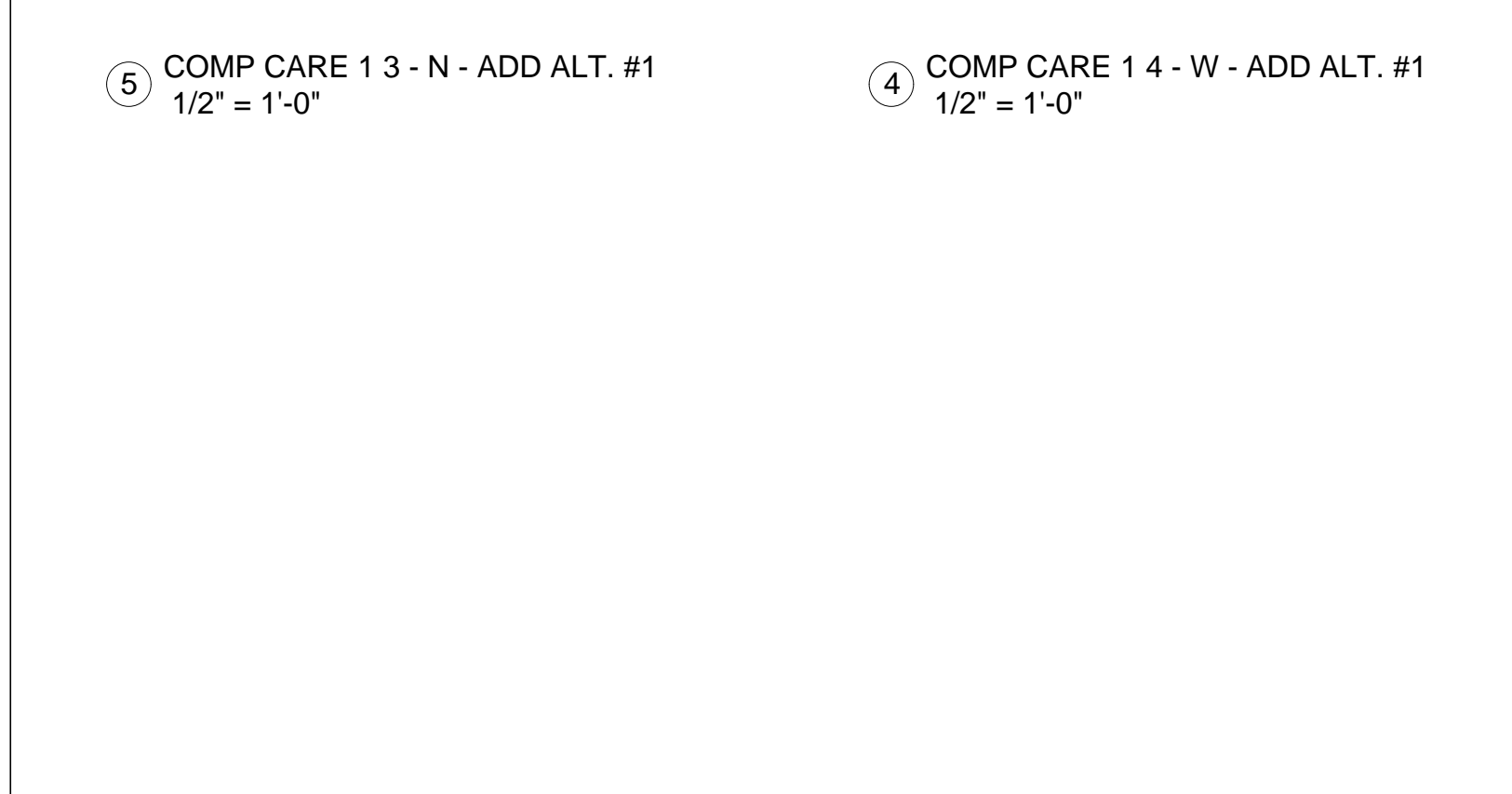
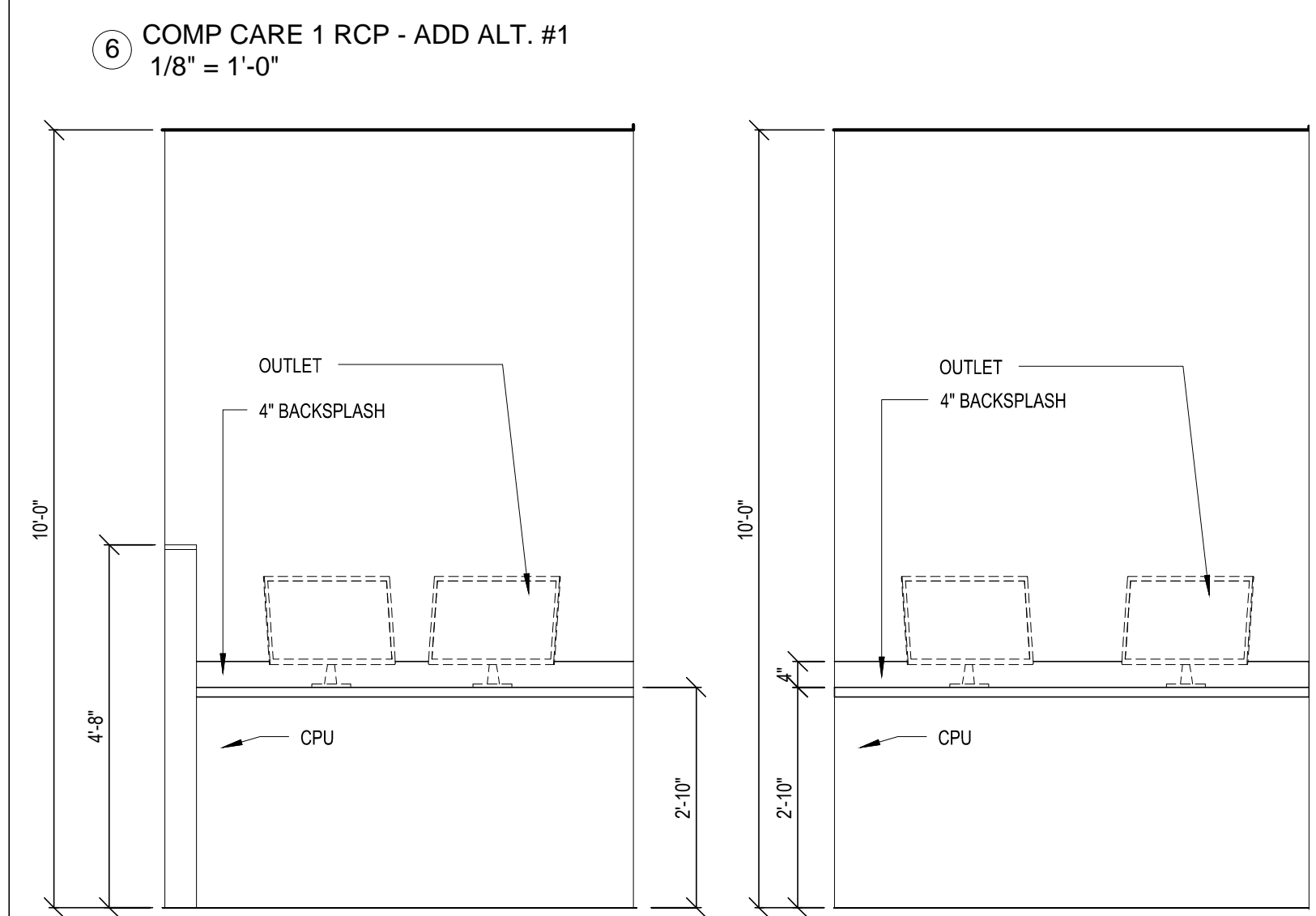
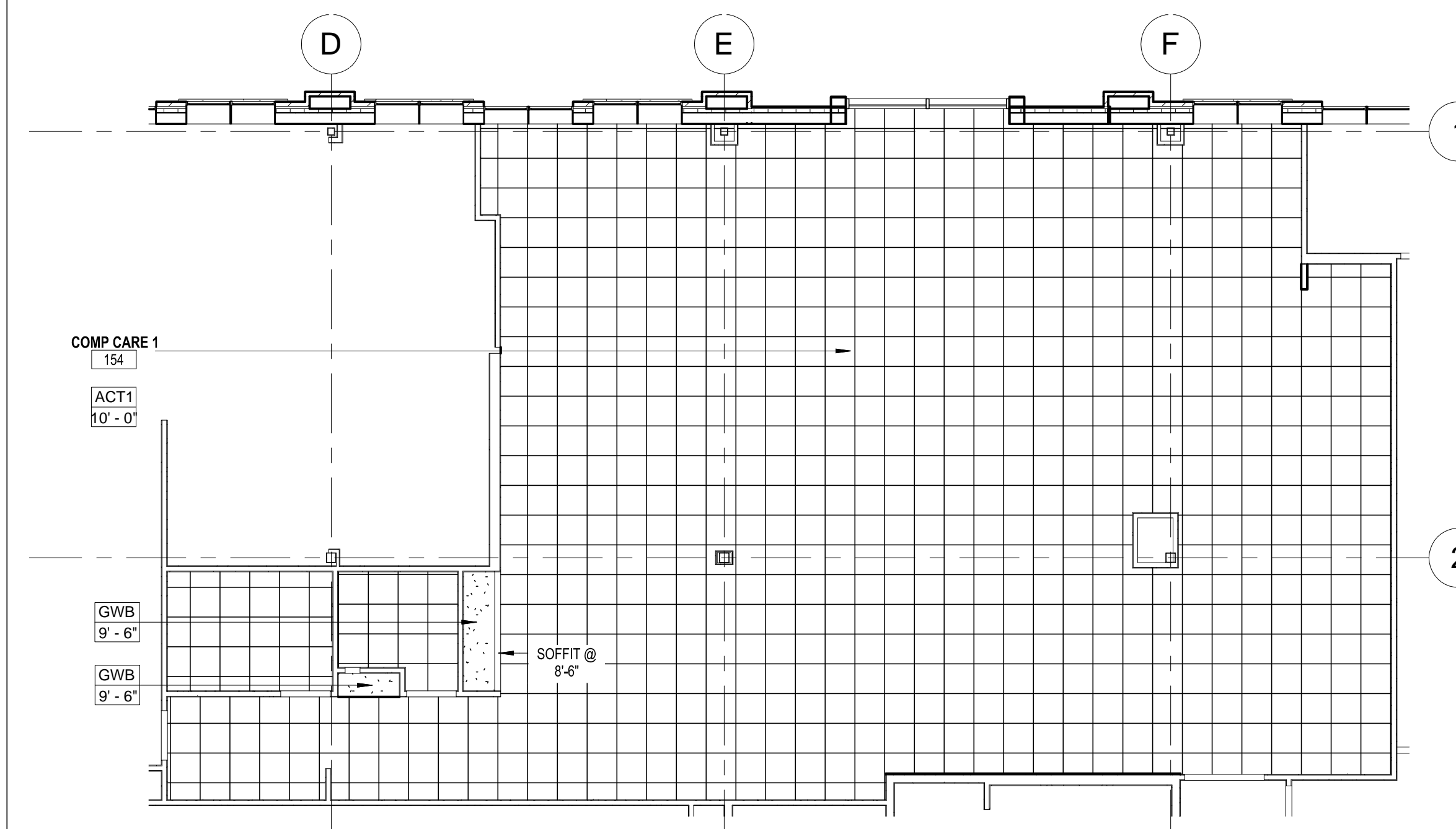
INTERIOR PLAN KEYNOTES

- 20 PASS THROUGH WINDOW ASSEMBLY WITH TRAYS - OF/OI. COORDINATE SIZE OF WALL OPENING WITH EQUIPMENT VENDOR.
- 21 WASHER-DISINFECTOR - OF/OI. COORDINATE SIZE OF WALL OPENING WITH EQUIPMENT VENDOR.
- 22 ULTRASONIC CLEANER - OF/OI
- 23 STERILIZER - OF/OI. COORDINATE SIZE OF WALL OPENING WITH EQUIPMENT VENDOR.
- 24 WATER SAVER FOR STERILIZER - OF/OI.
- 25 REVERSE OSMOSIS WATER PURIFICATION SYSTEM - OF/OI.
- 26 COMPUTER, MONITOR & KEYBOARD - OF/OI
- 27 PORTABLE WHEELCHAIR PLATFORM LIFT - OF/OI
- 28 DENTAL CASEWORK - V/F/OI
- 29 CENTER WALL ON COLUMN GIRDLINE
- 30 COPY MACHINE - OF/OI
- 31 DETERGENT MANAGEMENT SYSTEM - OF/OI
- 32 SEE FINISH PLANS FOR WOOD COLUMN SURROUND
- 33 PROVIDE (2) COAT HOOKS, STARTING 1'-0" FROM CORNER. SEE MOUNTING DETAIL 4/G1.10.
- 34 WASTE CONTAINER - OF/OI
- 35 PROVIDE (5) 12" DEEP P-LAM SHELVES ON ADJUSTABLE STANDARDS, ON TWO WALLS
- 36 PROVIDE SHELVES ON STANDARDS AND (1) MOPIBROOM HOLDER. SEE DETAIL 2/G1.10 AND SECTION 10 28 00.
- 37 SEE THE SHELL PACKAGE FOR WALL TYPES AT THIS ROOM

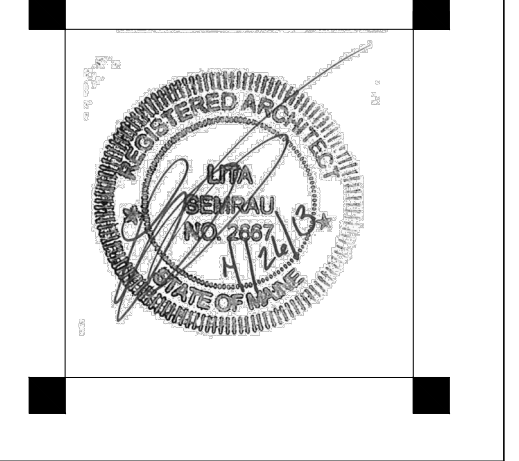
INTERIOR PLAN KEYNOTES

- 38 LOCKER FILLER PANEL, TYP. AT BOTH ENDS OF EACH ROW OF LOCKERS
- 39 SEE ALSO EQUIPMENT PLANS FOR CHAIRS AND OTHER EQUIPMENT REQUIRED IN THIS ROOM
- 40 PROVIDE 4" HIGH SATIN-FINISHED DIMENSIONAL LETTERS (30 CHARACTERS) FOR SIGNAGE AT THIS LOCATION. FINAL MESSAGE AND DESIGN TO BE DETERMINED BY OWNER.
- 41 3'-6" 1 1/2" DIA GRAB BAR
- 42 3'-0" 1 1/2" DIA GRAB BAR
- 43 24" x 36" MIRROR

IF THIS SHEET IS NOT 24 X 36 IT IS A REDUCED SCALE PRINT - SCALE ACCORDINGLY



65 NEWBURY STREET
PORTLAND, ME 04101
207.761.9000
info@portcityarch.com
WWW.PORTCITYARCH.COM



CONSULTANTS

Kahler Slater
experience design

BECKER

Vincent A. Dilorio Inc.

EDE INC.
E.D.E. INC.
2000 W. 10TH AVE
SUITE 100
PORTLAND, ME 04102
TEL: 207-761-9000
WWW.EDEINC.COM

Site Design Associates
23 Whitney Way
Topsham, Maine 04086
207-449-4275

REVISIONS		
No.	Description	Date
4	Add Alternate #1	2/08/13
3	First Floor Redesign	1/09/13
2	Addendum #9	8/16/12
1	Addendum #8	7/30/12

PERMIT DOCUMENTS

UNIVERSITY OF NEW ENGLAND
PORTLAND, MAINE

PATIENT CARE CENTER
COMP CARE FIT-OUT

ENL. PLANS & ELEVS

Project Number 12533.00
Date April 26, 2013
Drawn by JAP/JTC/SB
Checked by LAS

A1.2

Scale As indicated